

emma's

P R O P E R T I E S



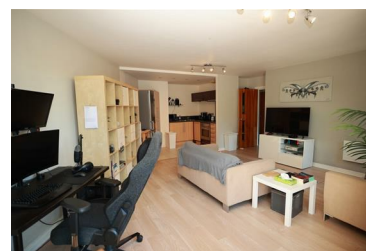
Apartment 56, Liberty Place 26-38 Sheepcote Street, £1,000 Per month



Nestled in the heart of Birmingham's vibrant city centre, Liberty Place offers an exceptional blend of modern living, convenience, and style. Set within the highly sought-after Liberty Place development, this fully furnished apartment benefits from an enviable location alongside the added reassurance of a 24-hour concierge service, providing both security and a welcoming residential environment.

Located in Birmingham's lively Canalside Quarter, the apartment is just a short walk from the renowned Brindleyplace and Broad Street, home to an array of bars, restaurants, and entertainment venues. Cultural and leisure attractions including the National SEA LIFE Centre, The ICC, and Symphony Hall are all close by. The nearby Mailbox and Grand Central Station further enhance the apartment's appeal, offering excellent shopping, dining, and transport connections.

The apartment is fully furnished, making it an ideal turnkey option for tenants seeking a hassle-free move. Designed with contemporary living in mind, it sits within a beautifully maintained development that showcases a sleek and sophisticated finish throughout. Liberty Place provides a peaceful retreat from city life, featuring secure gated access and immaculately maintained communal areas.



emma's
P R O P E R T I E S

4 Rectory Lane, Rectory Lane, Birmingham, B36 9DH

Tel: 01217 944916

Email: Emma@emmasproperties.co.uk